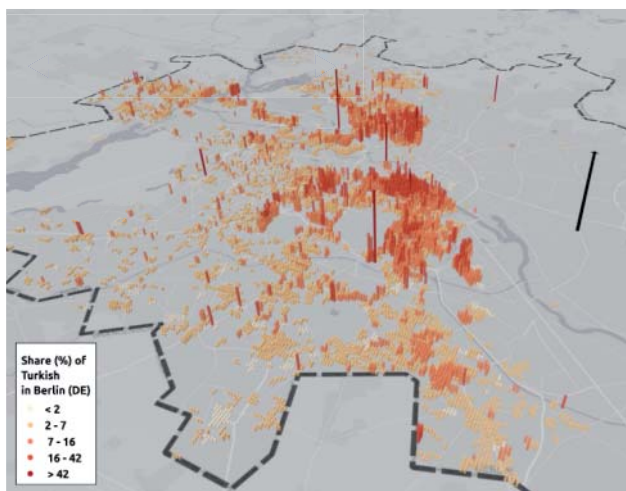


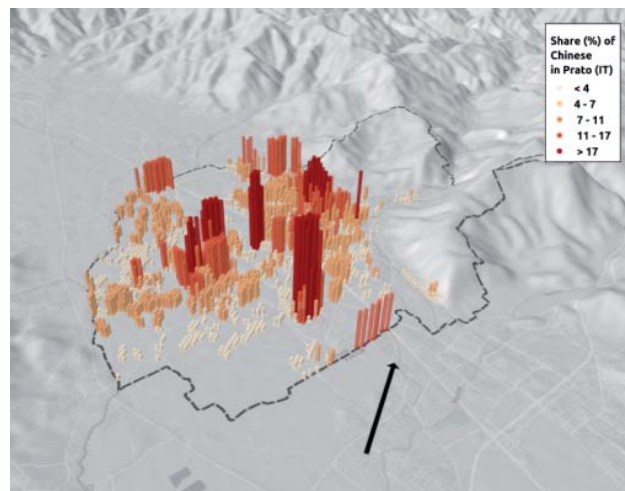
# D4I - Data for Integration

## Migration and European cities: united or segregated in diversity?

### Turkish nationals in Berlin (DE)



### Chinese nationals in Prato (IT)



The European Union's motto 'United in diversity' signifies how Europeans have come together whilst being enriched by their different cultures and traditions.

However, when it comes to migration, diversity is often perceived as a problem bringing about increasing levels of segregation. The D4I initiative highlights the need to bring better data into this debate.

Findings from analysis of Census data in eight EU Member States show that as migration has increased the population of European cities has become more diverse. This can result in populations which are highly diverse but also fragmented, with communities living apart in different neighbourhoods.

The maps above show the ratio of population from certain countries of origin as a share of the total population living in that area. The highest bars indicate where more than 20 percent of the population is of migrant background. These maps show the extent to which different groups cluster in specific areas of cities. To what extent and the time when clustering may turn into segregation and isolation is a question of relevance to public policy. These initial findings highlight the value of collating and analysing data at a high spatial resolution to better inform policymaking through research in the future.