



Land
Monitoring

Copernicus Land Monitoring Service product portfolio

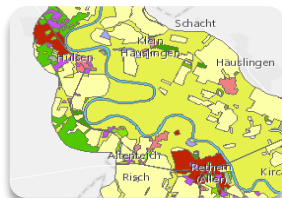


Local

Urban Atlas
2006-12-18



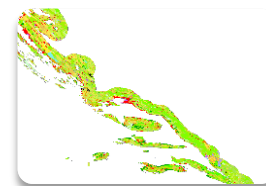
Riparian Zones
2012-18



N2K
2006-12-18



Coastal Zones
2012-18

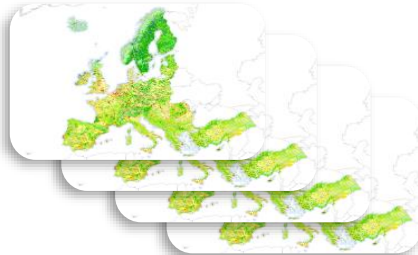


VHR optical images
(2-5m pixel)

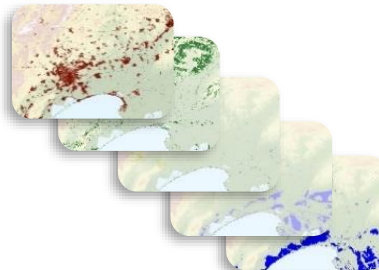


Pan European

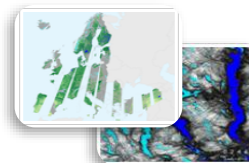
CLC & CLCC
1990-2000-06-12-18



High Resolution Layers
2006-09-12-15-18



**Biophysical
parameters**



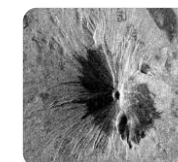
**European Ground
Motion Service**



HR optical images
(Sentinel 2 10-20m pixel)



HR radar images
(SRTM, Sentinel 1 14m pixel)



Imagery and reference data

EU-DEM



EU-Hydro



PROGRAMME OF THE
EUROPEAN UNION



Copernicus Land User Event 2022

Implemented by



European
Environment
Agency





Land
Monitoring

Biodiversity and CLMS

- CLMS addresses only terrestrial and fresh water biodiversity
- EEA will be developing the Thematic Hub on Biodiversity, that will need to include marine biodiversity as well
- We see Thematic Hub as an opportunity to improve BISE
- Input from KCEOis key as it covers main policy areas that will need to be addressed by the Thematic Hub

Usue.Donezar@eea.Europa.eu



PROGRAMME OF THE
EUROPEAN UNION



Copernicus Land User Event 2022

