



PROGRAMME OF THE
EUROPEAN UNION

Copernicus
Europe's eyes on Earth



European
Commission



KCEO Biodiversity Workshop

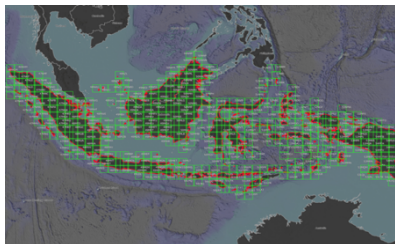
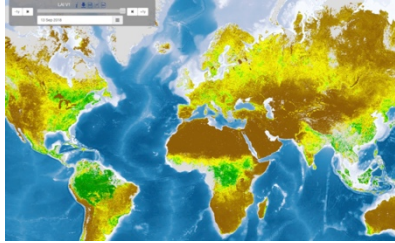
16/11/2022



**COPERNICUS
GLOBAL LAND
MONITORING
SERVICE**

EC Joint Research Centre

CLMS - Global Land components (2014-2027)



- Biophysical Variables and Land Cover – Forest systematic monitoring

➤ 23 biophysical variables: vegetation; cryosphere, energy, water (4 resolutions: 100m > 250/300m > 500m > 1km)

CGLOPS
LCFM

- Ground Based Observations for Validation

GBOV

- Hot Spot Monitoring and Sectoral Information

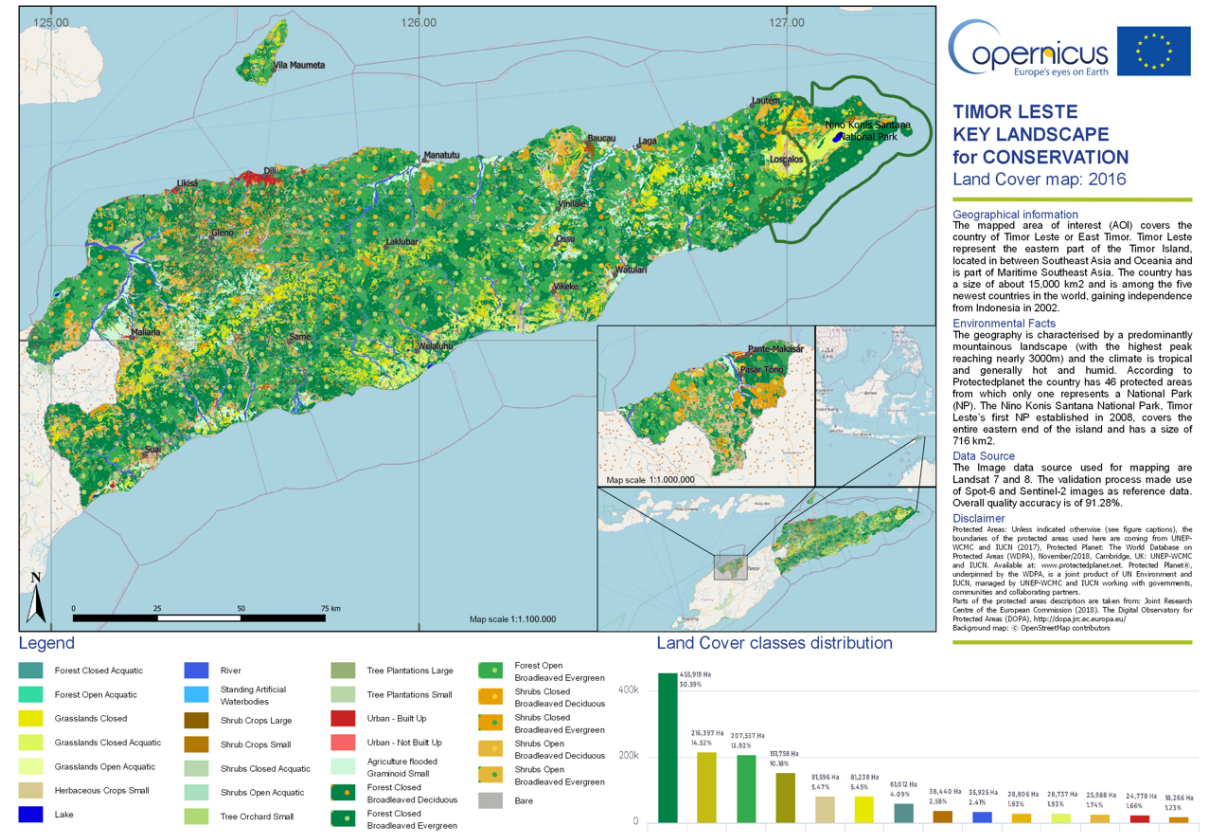
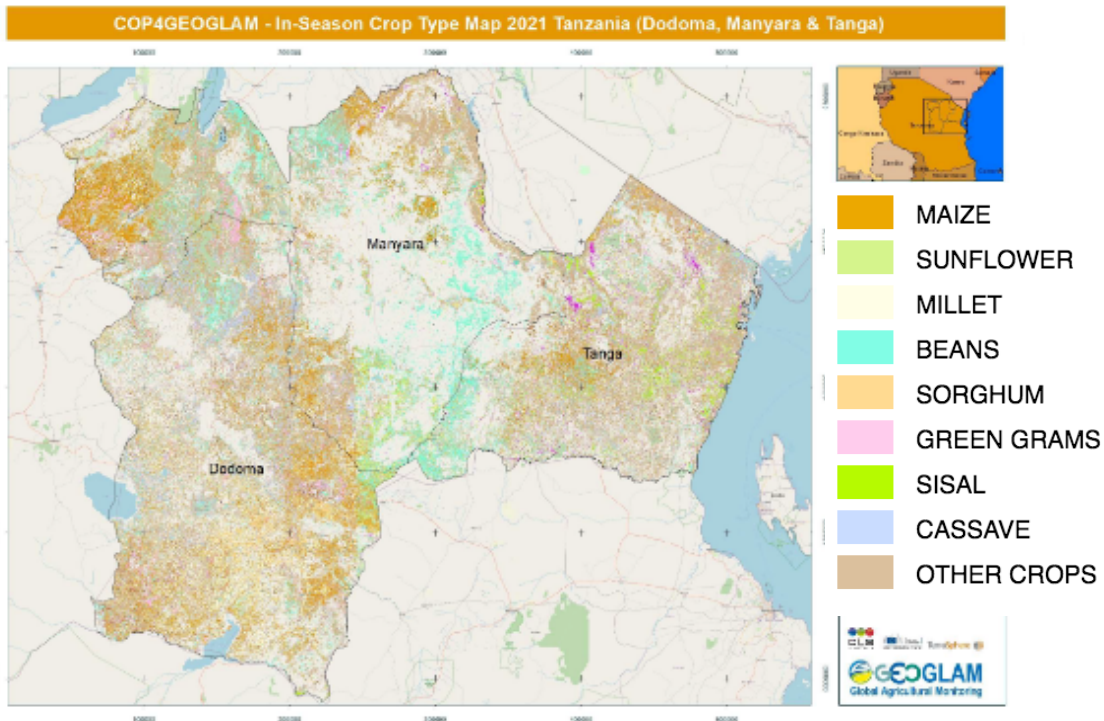
HSM

- Sentinel-2 Global Mosaic

S2GM

CLMS - Global

- Hot Spot Monitoring and Sectoral Information (20-30 m)



https://land.copernicus.eu/global/hsm#klc_list

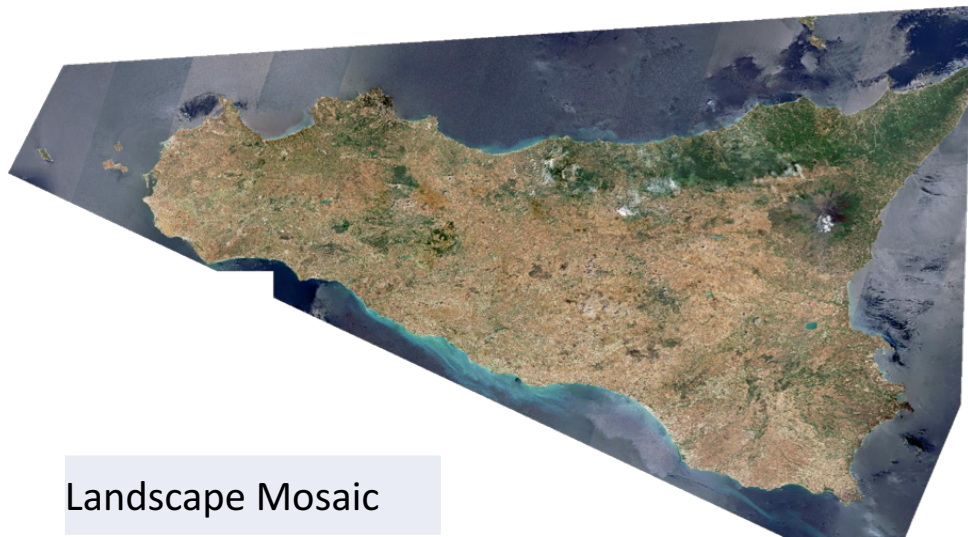
Indicator A1.1.1 - Terrestrial protected area coverage

Indicator A1.1.3 - Nationally designated terrestrial protected area coverage

CLMS - Global

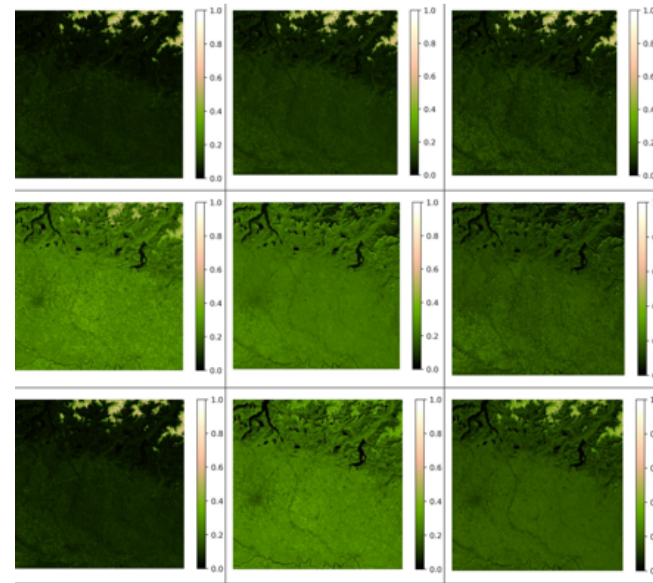
The Global Mosaic Service provides Sentinel-2 “**analysis ready**” data, i.e. intermediate products allow users to generate their own products.

10 m, 20 m & 60 m



Landscape Mosaic

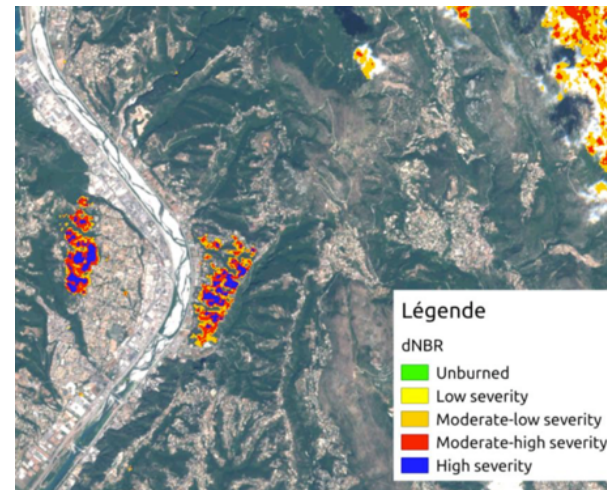
Surface albedo



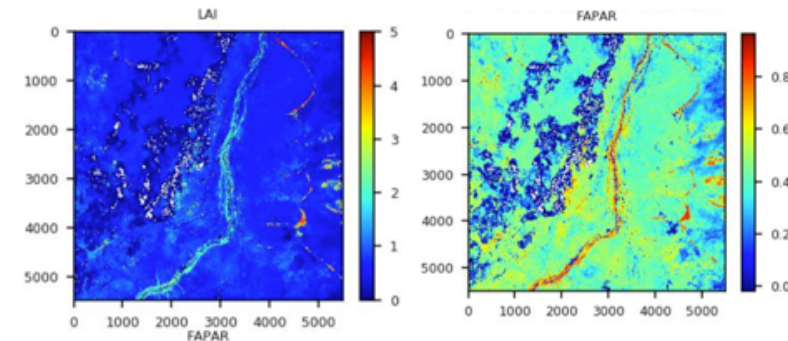
Next year



Burnt Area



LAI/FAPAR



% of habitats deteriorated by fire disturbance

% of habitats deteriorated by fire disturbance



Manaus city
in the
Amazonian
forest at the
encounter of
the clear Rio
Negro and
turbid Rio
Solimões
waters.



STAY CONNECTED

EVENTS, ONLINE, and MAP VIEWERS



@CopernicusLAND



land.copernicus.eu/global



land.copernicus.eu/global/viewing



PROGRAMME OF THE
EUROPEAN UNION