

The European Commission's Knowledge Centre on Migration and Demography (KCMD) aims at providing solid scientific evidence and tailored knowledge for EU policies related to migration and demography.

### KCMD highlights

#### Atlas of Migration 2020

On 18 December 2020, at the occasion of this year's International Migrants Day, the Knowledge Centre on Migration and Demography releases the third edition of the Atlas of Migration with freshly updated indicators for the 27 EU Member States and for 171 countries and territories in the rest of the world, and a new section entirely dedicated to the implications of the COVID-19 pandemic on international migration and mobility.



### Evidence for policy

The New Pact on Migration and Asylum, released by the Commission last on 23 September to propose "a fresh start on migration", recognises the role of KCMD in providing evidence-based support to crisis preparedness and response system. The Communication refers to KCMD reports International Migration Drivers (2018) and the Atlas of Migration (2019), the KCMD reports on Immigrant Key Workers: Their Contribution to Europe's COVID-19 Response and A Vulnerable Workforce: Migrant Workers in the COVID-19 Pandemic are mentioned in the Staff Working Document.

The new Commission's Action plan on integration and inclusion released on 24 November 2020, cites four KCMD reports: Immigrant Key Workers: Their Contribution to Europe's COVID-19 Response, Projecting the net fiscal impact of immigration in the EU, Migration in EU Rural Areas and Gaps in the EU Labour Market Participation Rates: an intersectional assessment of the role of gender and migrant status.

With the report Foreign Degrees, Region of Birth and Under-utilisation of Tertiary Education in the EU, KCMD contributed to the European Skills Agenda for sustainable competitiveness, social fairness and resilience adopted on the 1st July 2020. KCMD quantitative analysis was used to support Action 11 - 'New Europass platform' provision to 'support legally residing migrants to showcase their skills and qualifications and facilitate their recognition through better information'.

#### Next steps:

Leveraging on the work carried out to contribute to Report on the Impact of Demographic Change in the EU, and at the explicit request of Vice-President Dubravka Šuica - European Commissioner for Democracy and Demography, KCMD is currently preparing two Science for Policy reports to the forthcoming EU Green Paper on Ageing and Long-term vision for Rural areas:

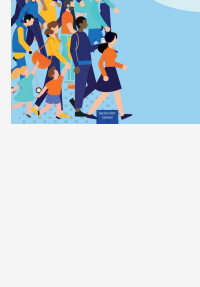
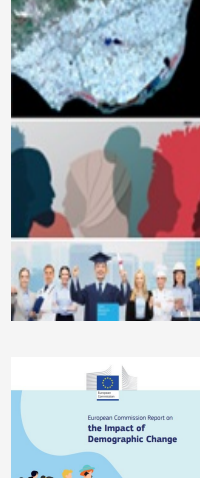
- the forthcoming report 'Demographic Landscape of EU Territories - Challenges and Opportunities in Diversely Ageing Regions' will identify, map and project ageing in EU territories up to 2050, to provide evidence and achieve the most detailed outlook of long-term demographic trends in European territories and regions and to explore differences in ageing across regions, municipalities and neighbourhoods at high level of geographical detail;
- the forthcoming report 'Health and long-term care: demographic challenges and potential contribution of migration and technology' will look at the long-term challenges faced by European health and care systems and the role of migration and digitalisation in addressing these challenges, also in light of shocks such as the COVID-19 pandemic.

#### Supporting the EU response to COVID-19

In an unprecedented collaboration between the European Commission and private Mobile Network Operators, and following the Commission's Recommendation to support exit strategies through mobile data and apps, KCMD is working, in close collaboration with DG CNECT, to understand the relationship between human mobility and the spread of the COVID-19 virus, thus contributing to the Commission's response to the ongoing COVID-19 crisis.

To this end, KCMD is analysing aggregated and anonymised data received pro-bono by European Mobile Network Operators. On the basis of the first three publications released last July (How human mobility explains the initial spread of COVID-19, Measuring the impact of COVID-19 Confinement Measures on Human Mobility using Mobile Positioning Data and Mapping Mobility Functional Areas (MFA) using Mobile Positioning Data to Inform COVID-19 Policies), KCMD is now developing new tools for policymakers and authorities to visualise mobility past, current trends and anomalies for improved situational awareness and response.

The Commission has used anonymised and aggregated mobile network operators' data to derive mobility insights and build tools to inform better targeted measures, in a Mobility Visualisation Platform, available to the Member States. Mobility insights are also useful in monitoring the effectiveness of measures once imposed. See The Commission Communication "Staying safe from COVID-19 during winter".



### Publications

#### Women from a migrant background face double challenges on the labour market

Being born outside the EU and being a woman reduces a person's probability to be active on the European labour market, regardless of their level of education.

In the EU, the conditions for women's participation in the labour market have improved in recent years, but gender gaps still remain. A new KCMD study finds that these improvements have been less impactful for women coming from a migrant background (i.e. those born outside the EU), and that their level of participation in the labour market has remained lower.

[Read more...](#)

#### Improving labour market integration for migrants is essential for reaping the fiscal benefits of migration

Policies targeted at increasing the labour market participation of non-EU migrants could generate large fiscal gains for the host countries. In a multi-disciplinary exercise combining fiscal modelling with demographic projections, KCMD scientists compared the net fiscal contributions of migrants and native-born citizens and estimated their evolution in the next 20 years.

Our study confirms that there are large differences in the tax contributions by native-born citizens, EU migrants and non-EU migrants, and projects that in the future the contributions by the three groups will evolve in very different directions.

[Read more...](#)

#### Youth and migration

Youth and migration: an overview examines dynamics of youth migration globally, in Africa and in the European Union. The study is based on a review and synthesis of scientific literature and data from international sources. It also proposes much needed definitions and terminology clarifications and contains projections about future population change and reflects on its social and economic implications. It precedes a more detailed report on the drivers and dynamics of youth migration from Africa to Europe which will be prepared in 2021.

[Read more...](#)

#### Involving Africa's young people in building a better future

Africa was recently described by Commissioner Urpilainen as 'a continent of youth brimming with confidence, full of potential'. It has the youngest population structure and the fastest growing youth population of all continents.

Understanding the opinions, concerns and aspirations of those young people will be vital for future partnerships between the EU and Africa. And a new KCMD report analysing data from the Afrobarometer public opinion survey suggests that Africa's young people could pave the way towards a more sustainable and equal future.

[Read more...](#)

#### Unemployment and economic issues are the main concerns of African youth

Working together with African countries is a priority for the European Union. During Commission President Ursula von der Leyen's first official visit to Ethiopia, she stressed the importance of a partnership of equals, and moving past decades of donor country-aid recipient relations.

Developing a partnership of equals implies understanding the challenges, interests and aspirations of African citizens. This has been the focus of a KCMD report assessing the results of a recent Afrobarometer public opinion survey.

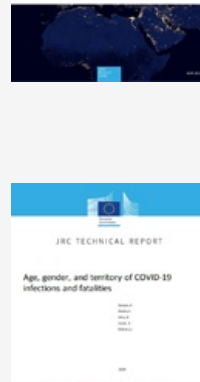
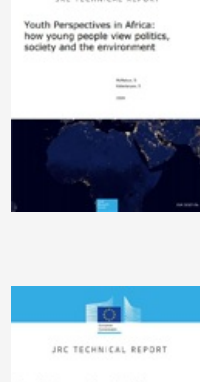
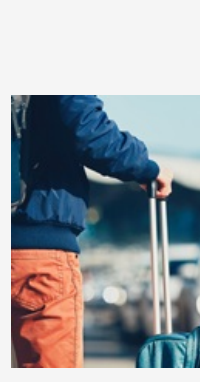
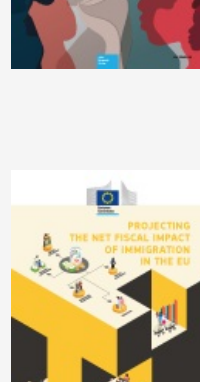
[Read more...](#)

#### One size does not fit all: coronavirus strategies should consider demographic and geographic factors

The coronavirus is more difficult to contain in densely populated areas and affects differently the different age and gender segments of the population.

A new analysis urges to consider geographic and demographic factors in the planning of the next stages of coronavirus mitigation strategies. KCMD researchers analysed the geographic spread of the virus as well as the age and gender of the patients in view of informing the measures for gradually reopening the EU.

[Read more...](#)



### Past events

JRC- DG HOME Roundtable

#### EU labour migration policy: time to move from a skill-based to a sector-based framework?

5 November 2020

Immediately after the release of the New Pact of Migration and Asylum and in light of the updated Skills Agenda released by the Commission, the EMN network, JRC and DG HOME invited a selected audience of more than 250 stakeholders from Member States and international organisations to participate to the online roundtable "EU labour migration policy: time to move from a skill-based to a sector-based framework?". In a series of Q&As and breakout sessions, the lively debate gathered together panellists and participants to reflect around the concept of "skills", a cornerstone of the EU labour migration management architecture. They expressed, under Chatham House Rules, their vision on current and past labour migration policies and their vision on the next steps, also in light of the ongoing COVID-19 pandemic

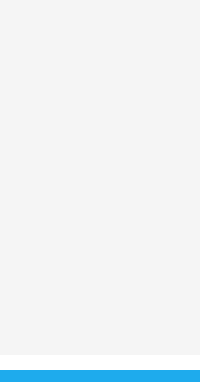
[Virtual EMN Annual Conference](#)

#### Towards effective asylum and migration management – Innovative approaches and their implementation in practice

29 October 2020

Every year, the EMN organises two conferences in cooperation with the current Presidency of the Council of the EU. This year's edition – one of the major appointments in the agenda of the Germany's Presidency of the Council of the European Union - addressed the EU's common challenges and practical strategies for effective asylum and migration management.

KCMD was represented by its co-chair Ms Dessislava Choumelova – Head of Unit 'Demography, Migration and Governance' at the Joint Research Centre of the European Commission, in the Panel session 'Knowledge and Information Management in the Migration Context: Cooperation in Europe'. The panel was chaired by Ms Katrin Hirseldard – Head of Research Department, BAMF and shared with Mr Ward Latrin – Head of Asylum Knowledge Centre, EASO and Mr Jean-Christophe Dumont- Head of the International Migration Division, OECD.



### Seminars - Trainings

#### In the last six months, KCMD researchers have contributed with their expertise to the following external seminars, conferences and training activities:

(7-8 December 2020)

10th Annual International Conference on Immigration in OECD countries - Silvia Migali presented the report "Estimating net migration at high spatial resolution" in the parallel session on International migration

(24 November 2020)

ITC-ILO Training – Sonja Kalantaryan introduced the Atlas of Migration to ITC-ILO students

(3 November 2020)

New Webinar Series "Harnessing Data Innovation for Migration Policy" of the Big Data for Migration Alliance – Michele Vespe contributed to the opening of the 1st webinar titled "Estimating migrant social and flows using social media data"

(14 October 2020)

18th European Week of Regions and Cities. Annual Conference – Guido Tintori contributed to the Workshop "Lonely Places" organised by the JRC and DG REGIO. The European Week of Regions and Cities is the biggest event on EU regional and urban policy, open to all stakeholders. It attracts thousands of practitioners and experts to discuss EU Cohesion Policy.

(8 July 2020)

Virtual seminar on the impact of COVID-19 on the migration situation in the Neighbourhood South organised by DG NEAR and facilitated by ICMPD - KCMD was represented by Sonja Kalantaryan and Giuliana Urso who together with Nathalie Tocci (Director of, Istituto Affari Internazionali (IAI)) were invited to talk in 'Setting the Scene: Migration - State of Play in the Region, Policy Context' section

(23 June 2020)

18th Project Workshop 'Forced Displacement, Migration and Development' of the Stiftung Wissenschaft und Politik (the German Institute for International and Security Affairs, SWP)– Silvia Migali presented 'Forecasting migration and forced migration: the potential of predictive analytics'

### New release

#### KCMD Dynamic Data Hub

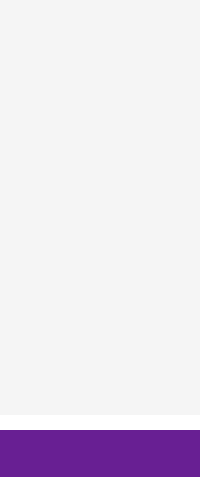
This new release introduces a restructured and reduced set of thematic sections (aligned to Eurostat grouping); the implementation of NUTS level; few usability improvements and additional datasets.

Thematic sections available: Demography & Migration; Population projections; Asylum & managed migration; Migrant integration; Children in Migration; Atlas of Migration; Migration & Development; Mobility.

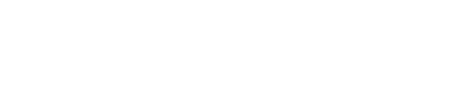
#### New datasets added:

- Eurostat: Population change - Demographic balance and crude rates national and regional (NUTS3) level (demography & migration section); final decisions on asylum applications (asylum & managed migration section) and acquisition of citizenship (migrant integration / naturalisation section); Third country nationals found to be illegally present, ordered to leave and returned (asylum & managed migration section).
- UNRWA registered Palestine refugees (asylum & managed migration / forced displacement section);
- Data for integration (D4I) dataset (produced by KCMD), presenting the concentration of migrants in all cities of eight selected European countries;
- COVID-19 air traffic scenarios (produced by KCMD, mobility section): estimating and projecting monthly Air Passenger Traffic Scenarios during the COVID-19 Coronavirus Outbreak;
- Estimates of net migration and natural increase (produced by KCMD, demography & migration section): estimating 5-year net migration at high spatial resolution (25 Km) and global coverage.

[Explore...](#)



### KCMD in the MEDIA



European Commission's Knowledge Centre on Migration and Demography (KCMD)

[Visit KCMD website](#) | [KCMD Video](#) | [Privacy Statement](#)

To subscribe/unsubscribe and for more information, please send an email to: [kcmd@ec.europa.eu](mailto:kcmd@ec.europa.eu)