

EUWA - The European Water Academy

a flagship initiative to strengthen water resilience in Europe

The European Union is grappling with substantial water challenges due to climate change, unsustainable practices, ageing infrastructure, and mismanagement. In response, the European Commission has introduced the European Water Resilience Strategy, with the water efficiency first principle, featuring EUWA, the European Water Academy, as one of its flagship initiatives.

Our mission

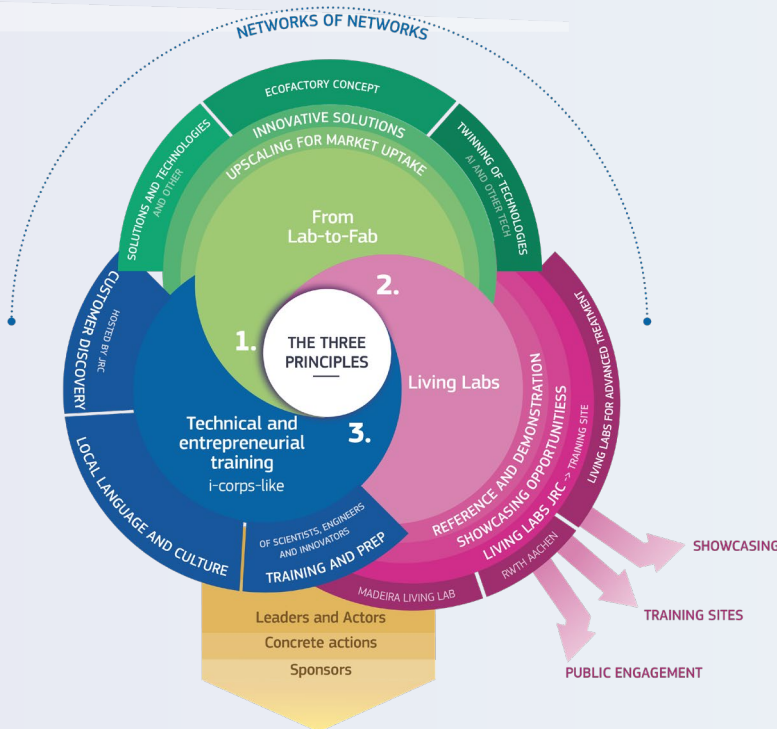


Address water challenges from climate change, unsustainable practices, and aging infrastructure.



Bridge research and practice through advanced training, innovation, and collaboration.

CONCEPT EUROPEAN WATER ACADEMY



Structure and Governance

The EUWA is structured as a network of networks, unified by three core principles that guide all its activities:

1. **Living Labs Principle:** Real-world sites for testing and training (e.g., INTERREG, HORIZON projects).
2. **Hands-on Training:** Local-language courses, customer discovery, and public engagement for broad acceptance.
3. **Lab-to-Fab Principle:** Develop scalable, market-ready solutions (AI, bio-engineering, eco-factories) to address water issues.

What's in for me?

✓ **Access to cutting-edge solutions**
Leverage the Lab-to-Fab Principle for scalable, market-ready innovations (e.g., AI, bio-engineering, eco-factories).

✓ **Practical, real-world training**
Engage in Living Labs for hands-on experience in local contexts (e.g., wastewater surveillance, water reuse).

✓ **Cross-sector collaboration**
Network with public and private stakeholders through public-private partnerships and co-led initiatives.

✓ **Professional development**
Attend high-profile events as well as specialised training to showcase innovations and gain skills in water sustainability.

Target audience

Public and private actors in the water sector with interest in water-related businesses. This includes:

**Water Utilities
(public and private)
and similar service
providers.**

**Companies
producing related
equipment for
water treatment.**


**Entities offering
professional
training and skills
development
programmes.**

Leadership

Under the leadership of the JRC, in close partnership with DG ENV and EC partner DG's (EMPL, EAC, RTD, GROW, MARE, CNECT, DEFIS, CLIMA, AGRI, ENER, SG), the academy is dedicated to meeting capacity needs and fostering skills development within Europe's water sector. It aims to bridge the gap between research and practical application by providing advanced training, supporting innovation, and promoting collaboration among public and private water-related stakeholders across Europe.

Key initiatives

 Engages sectors, sponsors, and donors by leveraging existing investments.

 JRC-led pilots: Wastewater Surveillance Academy for Health and Water Reuse Risk Management Community of Practice.

 Public-private partnerships drive EUWA through co-led initiatives.

