

► One of the largest STPs* in Europe

coming up soon in Greece

Thess INTEC

Thessaloniki Innovation & Technology Center



MADE
very well
IN GREECE

*Science & Technology Parks

The image is a composite architectural rendering. The background features a light blue sky with soft white clouds. In the upper left, a semi-transparent map of Europe is shown, with a red dot marking the location of Thessalonica in Greece. The main subject is a large, modern building with a white, perforated metal facade that allows light to filter through. The building has a long, low profile with a series of glass-fronted entrances and large windows. A prominent blue triangular graphic element is positioned on the right side of the building's facade. In the foreground, a paved pedestrian walkway runs alongside the building, with a red-painted bicycle lane marked with white 'BICYCLE' text. Several stylized human figures are scattered throughout the scene: a person on a bicycle on the left, a group of people walking near the entrance, and two people standing on the right. The overall atmosphere is bright and modern, suggesting a high-tech or academic environment.

Thess INTEC

It is a 4th generation STP and presents a perfect synergy of academia, research, high-tech industries, facilities and geopolitical location. Interest from international investors is already growing. It will be the first large-scale science and technology infrastructure in Greece.



Thessaloniki

Greece's most outward looking city.

Thessaloniki, the second largest Greek city and one of Europe's oldest, boasts the largest student population in South East Europe including 3 times the European average of engineering graduates.

THESSALONIKI
INNOVATION
FRIENDLY
DESTINATION

- ▶ International **Airport**
- ▶ Major **Port**
- ▶ Rich history, **social and cultural** life
- ▶ 1.000.000+ inhabitants/
one of the **youngest**
populations in Europe
- ▶ Huge **tourist** influx
to nearby Halkidiki
- ▶ Greece's **Exhibition** Hub
- ▶ 4 Universities /
Thessaloniki has a strong academ-
ic community of 120,000 students,
the largest in Greece
and South East Europe

Thessaloniki

Beyond the city

Thessaloniki is truly fascinating, but if you venture outside of it, you will discover that the surrounding area is also rich with places to explore and things to see and do.

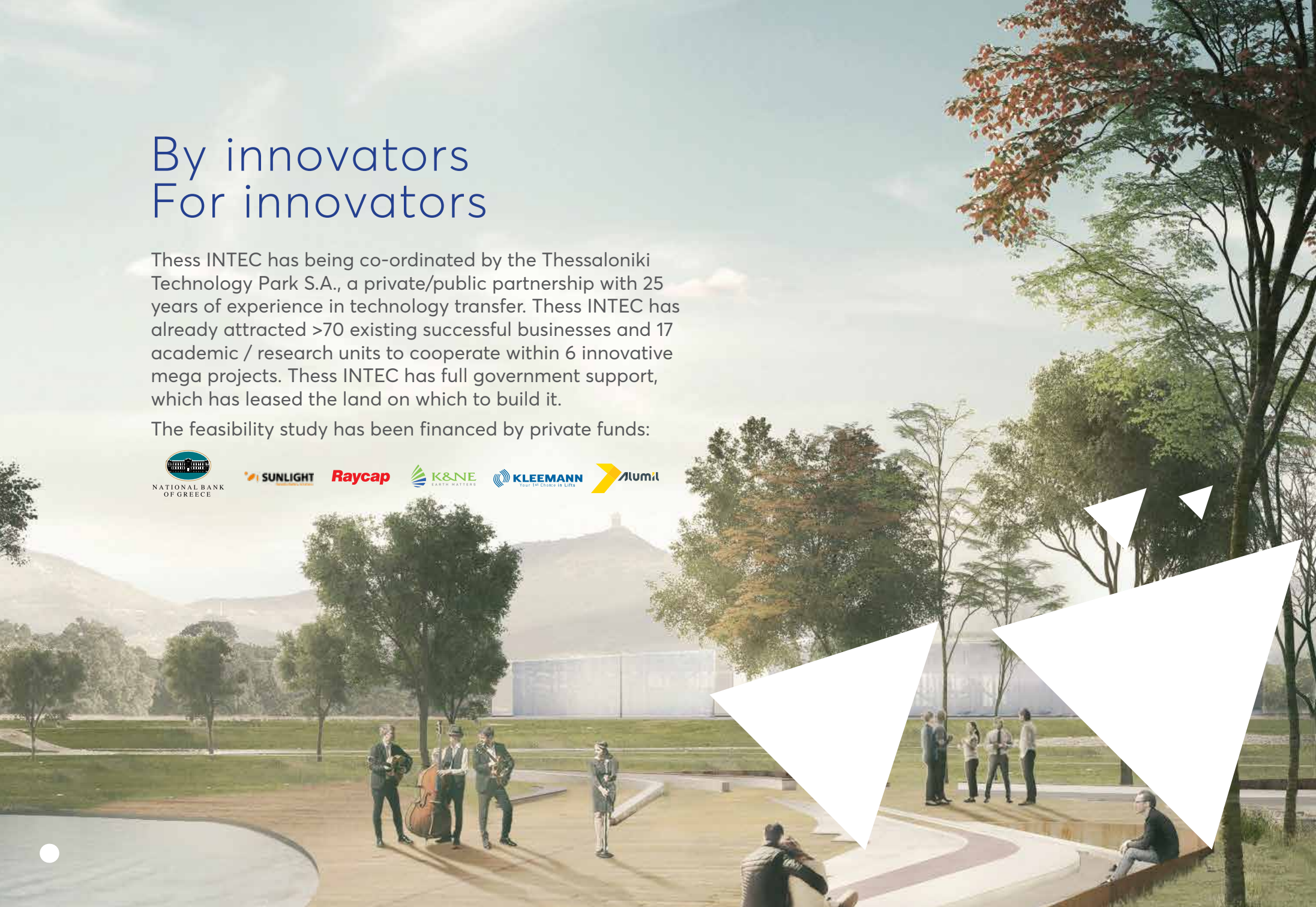
From pristine beaches with crystal clear waters to breathtaking mountain vistas, wine tasting extravaganzas to thousand-year-old monasteries, sailing or kitesurfing to mountaineering and ski touring on Mt Olympus, historical sites to crazy carnivals, Macedonia and its neighboring regions can please even the pickiest of wanderers.

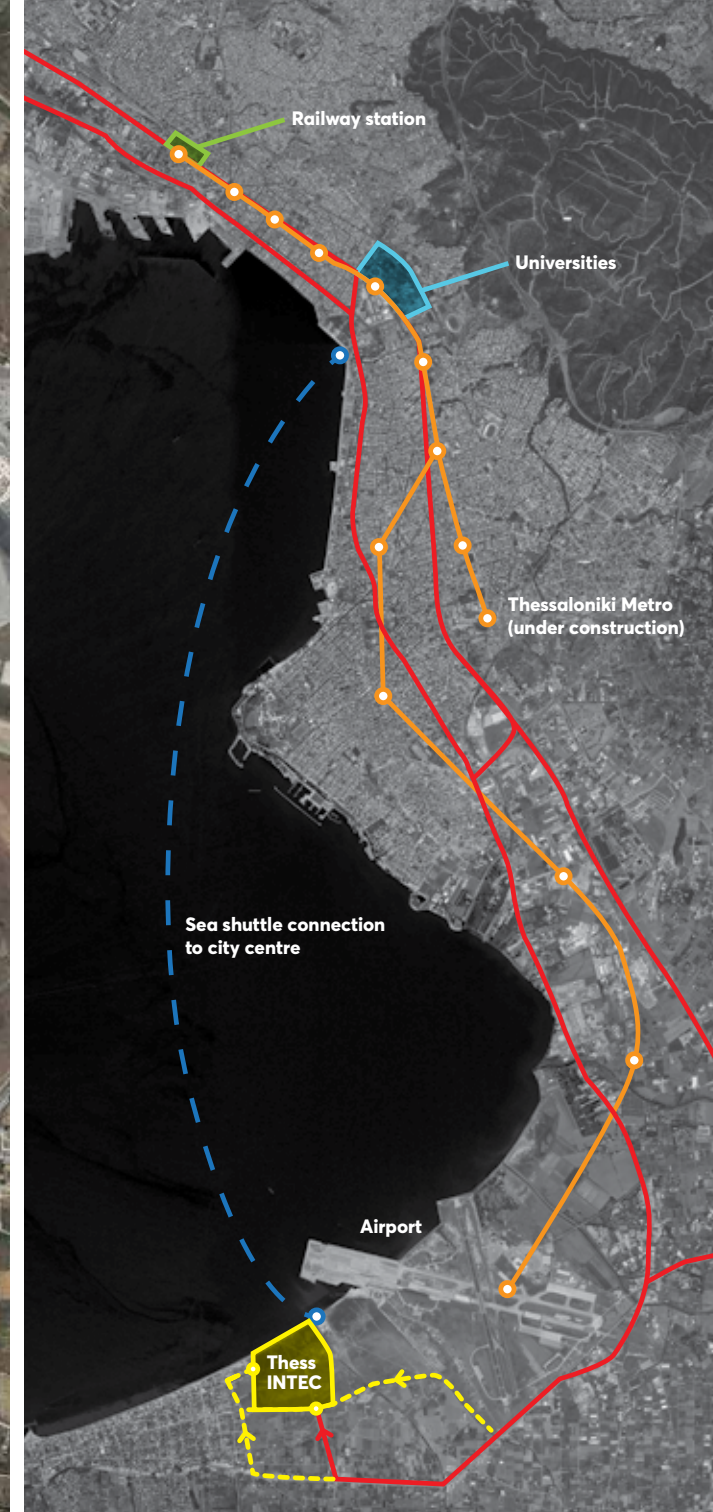


By innovators For innovators

Thess INTEC has being co-ordinated by the Thessaloniki Technology Park S.A., a private/public partnership with 25 years of experience in technology transfer. Thess INTEC has already attracted >70 existing successful businesses and 17 academic / research units to cooperate within 6 innovative mega projects. Thess INTEC has full government support, which has leased the land on which to build it.

The feasibility study has been financed by private funds:







Main services include:

Office/Lab spaces

Pre-incubation, incubation, equipment allocation, common workshops, meeting rooms, auditorium, sports, cafe, etc.

Consultancy services

Legal, R & D grants, administration support

Networking

with public and private sector, supporting access to European R & D funding

Synergy platforms

with Thess INTEC Mega projects, tenants and international partners

Identifying local HR

Offering business community access to internationally competitive R&D labs and vast pool of STEM and engineering graduates, as well as, tailor made training programs

Land space lease

for developing own technology infrastructure in accordance to Thess INTEC specifications

Our mission and objectives:

Sustainable - Emerging Technologies

for academia, hand in hand with internationally competitive businesses

Open / living labs

within Thess INTEC physical space and Mega project clusters

Smart P.P. Partnerships

and financial engineering for developing R & D infrastructures

Industry 4.0 EU initiatives

for regional, national, and international businesses

Smart City - Research Demo Platforms

for smart grid and autonomous vehicle technologies

Holistic environmental and minimal carbon footprint

**across all scales of intervention, from the use of materials
to energy management and consumption**

Mega Projects

MP1

Advanced
Materials and
Manufacturing
Processes

MP2

Flexible Organic
Nanotechnology
Applications

MP3

Artificial
Intelligence
& Simulation
Applications

MP4

Clean Energy
Innovative
Solutions

MP5

Competence
Center
for Business
and Logistics
Challenges

MP6

Future
Mobility
Applications

Under development

MP7 / Biosciences

MP8 / Agro & Food Technologies

Mega Projects

Structure examples

MP1 10 businesses
3 laboratories

R&D Partners

Megaproject Partner



Dept. of Mechanical Engineering
1. Lab of Machine Elements and Machine Design
2. Lab of Physical Metallurgy

ATM
TEXAS A&M UNIVERSITY

TEES
TEXAS A&M ENGINEERING & TECHNOLOGY EDUCATION CENTER

Tenants

Alumil

PLIN **Brite**

CHIMAR

Collaborators

isomat **KLEEMANN**

BT **Raycap**


ALPHA PARTS **MYTILINEOS**

Industrial Partners

MP3 22 businesses
3 laboratories

R&D Partners

Megaproject Partner



R&D Contributors

Laboratory of Process Systems Design and Implementation (LPSDI)

Dept. of Electrical Engineering Power Systems Laboratory

Tenants

SingularLogic **FAKEXTRA**

Smart Technology - Smart World **Conartia**

vidavo **D-cube** **gnomon**

infalia **Blockchain** **protergia**

Collaborators

INTRACOM **AUSTRIACARD**

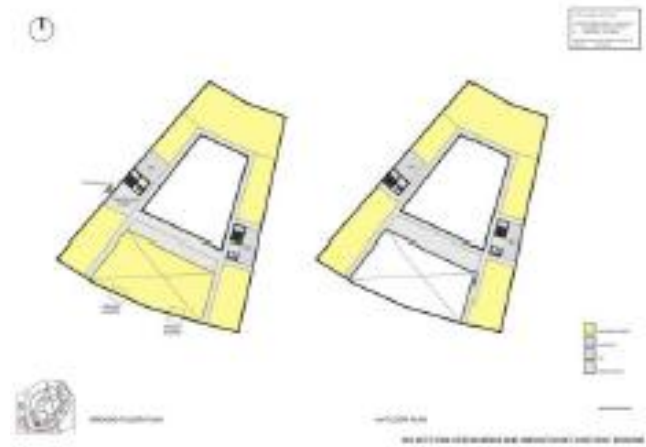
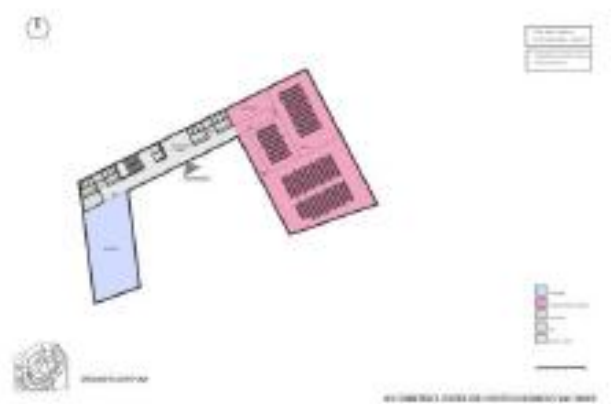
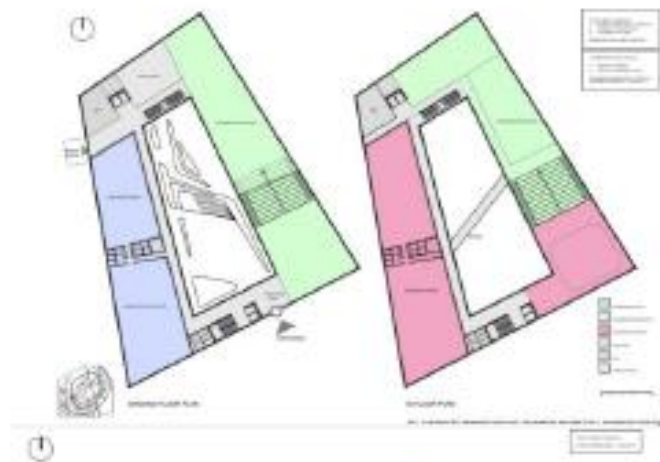
INTRASOFT **NEUROPUBLIC**

INFORM **SUNLIGHT**

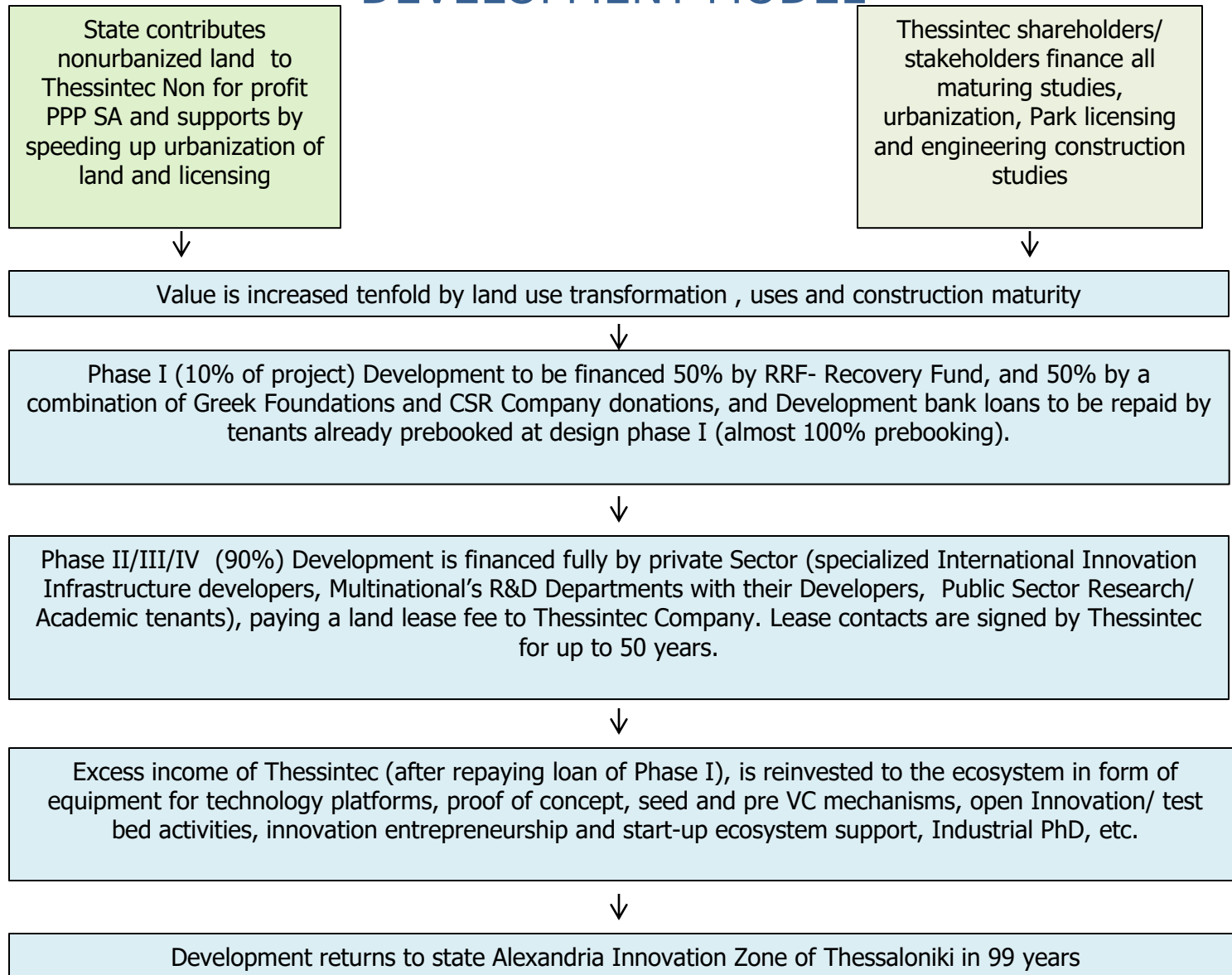
Marine Technical Center **ATC** **KLEEMANN**

SPAC **SPACE** **LIONCOE**

Industrial Partners



THESSINTEC LAND AND INFRASTRUCTURE DEVELOPMENT MODEL





AT A GLANCE

August 2021

Location:	Superb waterfront property in the Municipality of Thermaikos, next to Thessaloniki’s International Airport		
Area:	760.807 sqm (Total B.U.A.: ~ 250.000 sqm)		
LEGAL FRAMEWORK:			
Completed	<ul style="list-style-type: none">Land: Exclusive Surface Rights for 99 yearsThess INTEC SA: Not-for-profit OrganizationDonations: 100% tax deductible		Law 4690/2020 Law 4712/2020 Law 4714/2020
Exclusive Surface Rights for 99 years	In favor of Thess INTEC SA - Business Park Development Company Notarial Act (4/2/2021)		
Objective :	Establishment of Thessaloniki Innovation & Technology Center (Thess INTEC), within the law (3982/2011) that governs Special Type Business Parks in Greece		
Thess INTEC SA: Not-for-profit, Public Benefit Societe Anonyme	SHAREHOLDERS:		
	<ul style="list-style-type: none">58% Private Sector Institutions and companies (7 Board Members)42% Public Sector Institutions (4 Board Members)		
Who is it for:	<ul style="list-style-type: none">Partnerships between extrovert innovative companies and research teams of academic institutionsStartups and Spin offsR&D departments of high-tech businessesGreek and International Investment Funds		
Initial Infrastructure Investment:	€70 m. + VAT:		
	<ul style="list-style-type: none">Land Configuration & Networks construction (on the total area)Initial Building Infrastructure ~ 25.000 sqm (10% of total B.U.A)		
Next phases of Park’s Development: >€500 m + VAT in the next 10 years	<ul style="list-style-type: none">Private Sector Investments on R&D facilities (90% of total B.U.A)		
Benefit for the national economy and the local communities	<ul style="list-style-type: none">7.000 new research related jobs2% increase in Central Macedonia’s GDPTotal financial impact: first 10 years €2,05b, first 20 years €11,20b		
Timeline	<ul style="list-style-type: none">Building Permits and Business Park Licensing, Q2/2022Land Configuration & Networks construction, Q2/2023Building infrastructure completion, Q2/2024		

Qualities

Outdoor seating

Water Canal

Outdoor Sports
& Recreation

Aquarium

Water features

Naturally Shaded
Parking areas

Lake activities

Cycling lanes

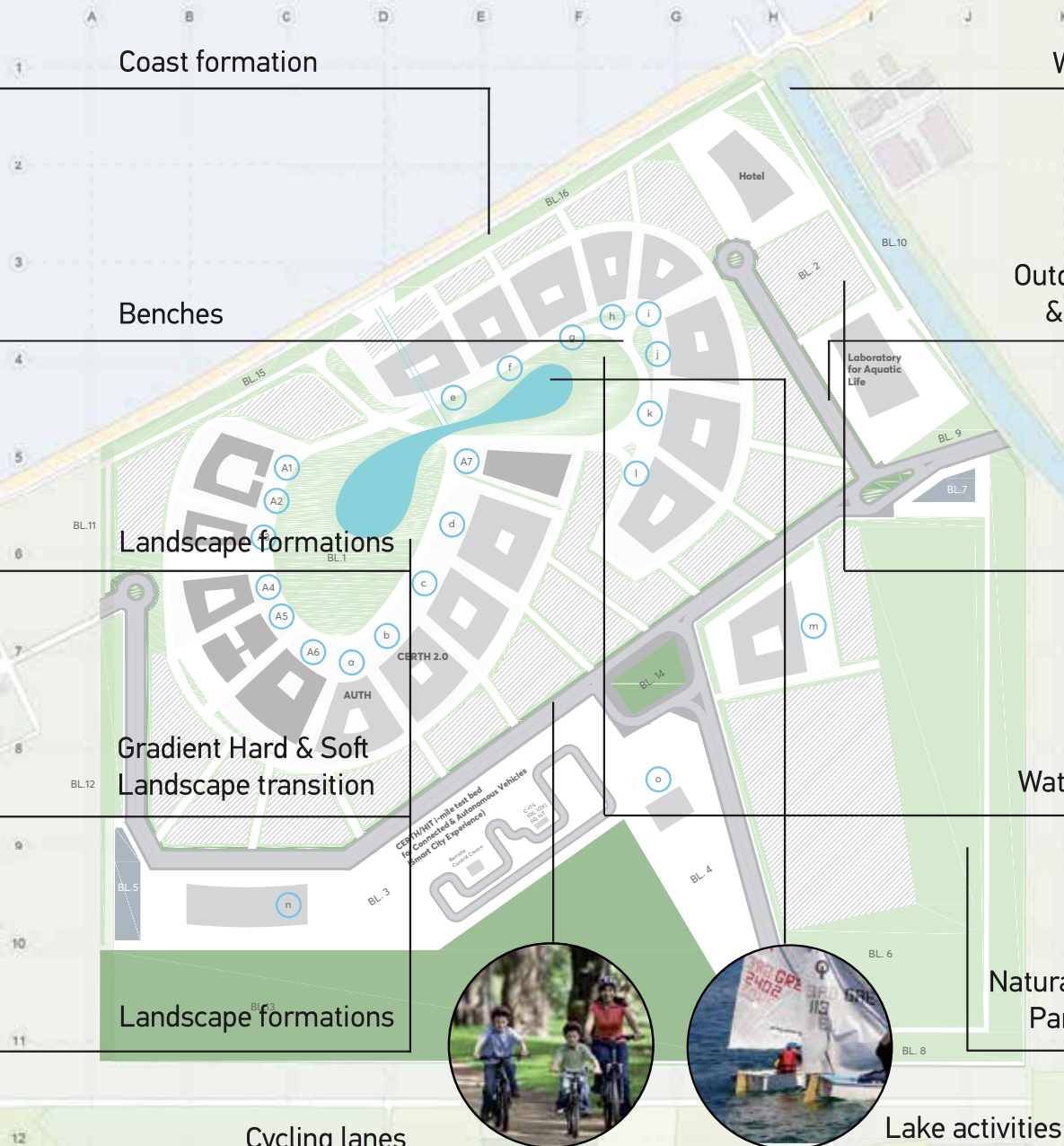
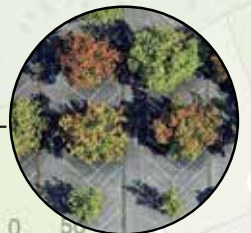
Coast formation

Benches

Landscape formations

Gradient Hard & Soft
Landscape transition

Landscape formations



Thess INTEC Supporters

Hellenic Republic - Region of Central Macedonia

Thessaloniki Innovation Zone

City of Thessaloniki

Municipality of Thermaikos

Municipality of Thermi

Aristotle University of Thessaloniki

International Hellenic University

RELLIS - The Texas A&M University System

Federation of Industries of Greece

**SEPVE - Association of Information Technology Companies
of Northern Greece**

Greek Exporters Association

Thessaloniki Chamber of Commerce and Industry

Technical Chamber of Greece

Compete. - U.S. Council on Competitiveness

IASP - International Association of Science Parks and Areas of Innovation

American Farm School

Technopolis - Thessaloniki ICT Business Park

THERMI Business Incubator

i4G - Incubation for Growth

TPK - Technologiepark Karlsruhe

laSalle - Technova Barcelona

GOLD SPONSORS



SILVER SPONSORS



BRONZE SPONSORS



SUPPORTERS



Thess INTEC Shareholders



Thess INTEC Industrial Partners



High-tech means
handsome returns



MADE
very well
IN GREECE

Over the first
5 years
* **€432M**

Over the first
10 years
* **€2.05B**

Over the first
20 years
* **€11.2B**

- ▶ 7,000 permanent employees
- ▶ 1,300 jobs in science and R&D
- ▶ 4,000 jobs in business innovation
- ▶ 200,000m² total built area
20,000m² 1st phase built area

* cumulative addition to GDP