

OPERATIONALISATION OF WELL-BEING

A Benefit of the Doubt model for Dutch municipalities

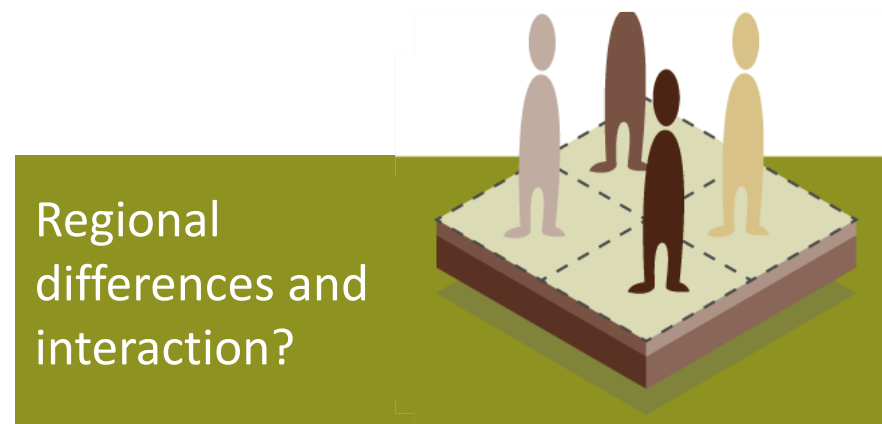
Mark Thissen & Jeroen Content

PBL Netherlands Environmental Assessment Agency, The Hague, The Netherlands

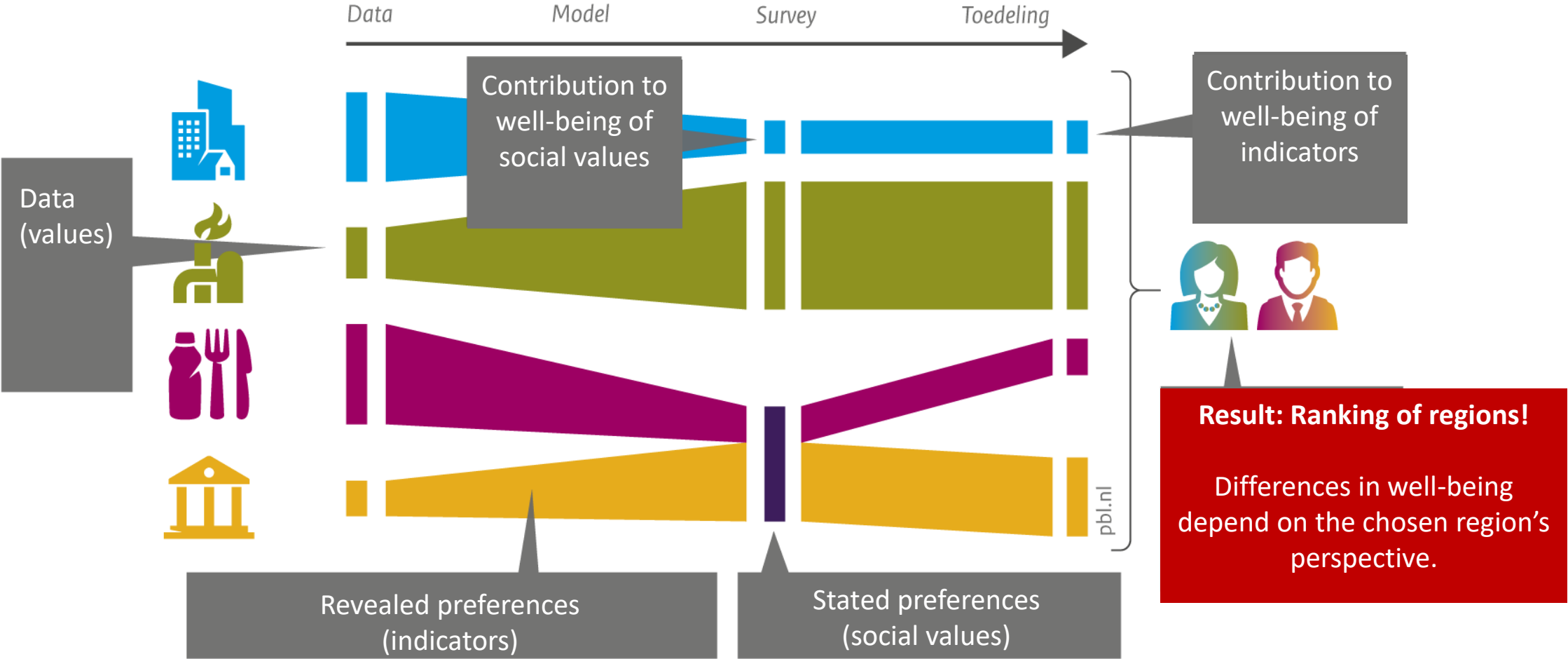
Well-being is on the top of the political agenda:

- > Beyond-GDP discussion (Stiglitz et al., 2009; Constanza et al., 2009; Fleurbaey, 2009; Jones & Klenow, 2016)
- > The OECD better than life initiative (2014)

- > **How to operationalize Well-being?**
- > **How to operationalize regional differences (355 municipalities)?**
- > **How to take regional interaction into account?**



Hybrid benefit of the doubt model



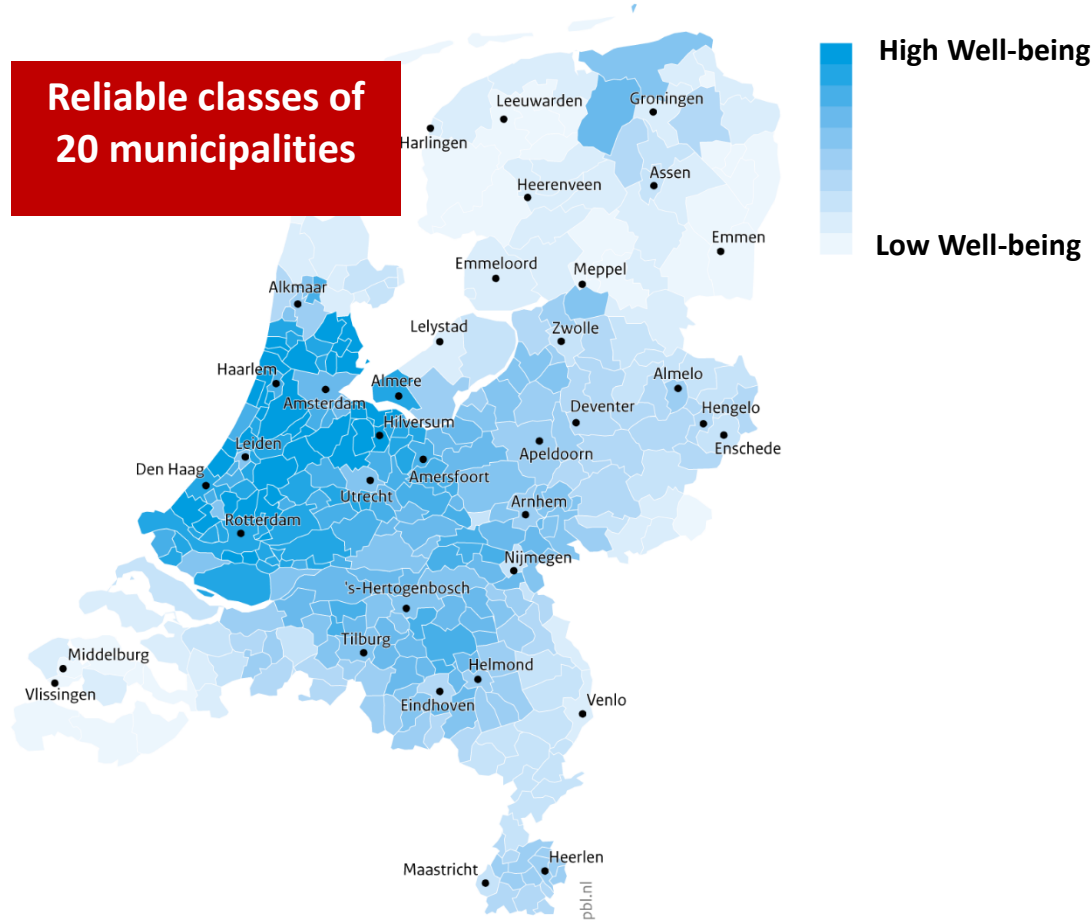
- > How: Bootstrap\simulation method
 - 4000 model simulations with a random set of between 80 and 100 percent of all municipalities.

- > Reliability of results:
 - Selection of reliable indicators (t-statistics)
 - 90 percent significance level: **margin of error is ± 10 places in the ranking of municipalities**

Results: communicating uncertainty

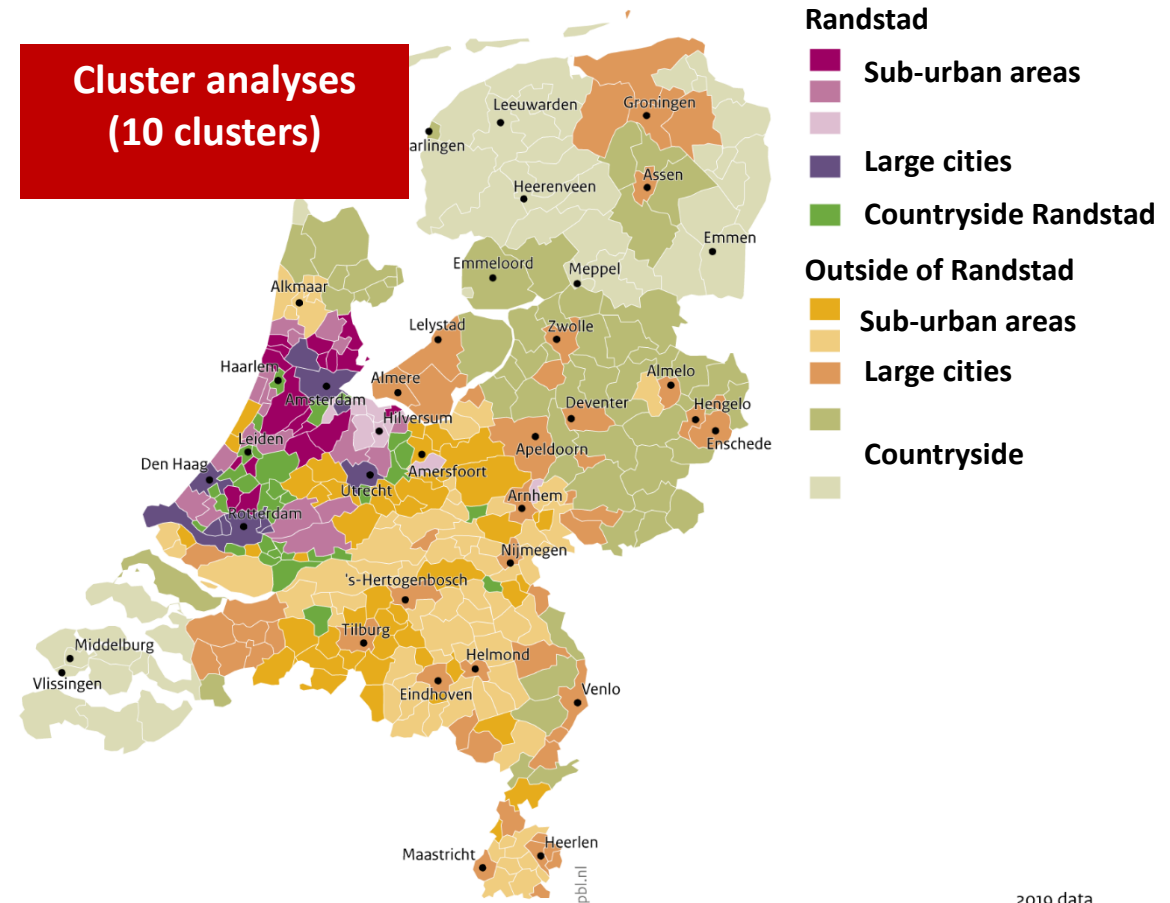


Ranking of municipalities based on the well-being of inhabitants



Bron: PBL

Typologies of municipalities

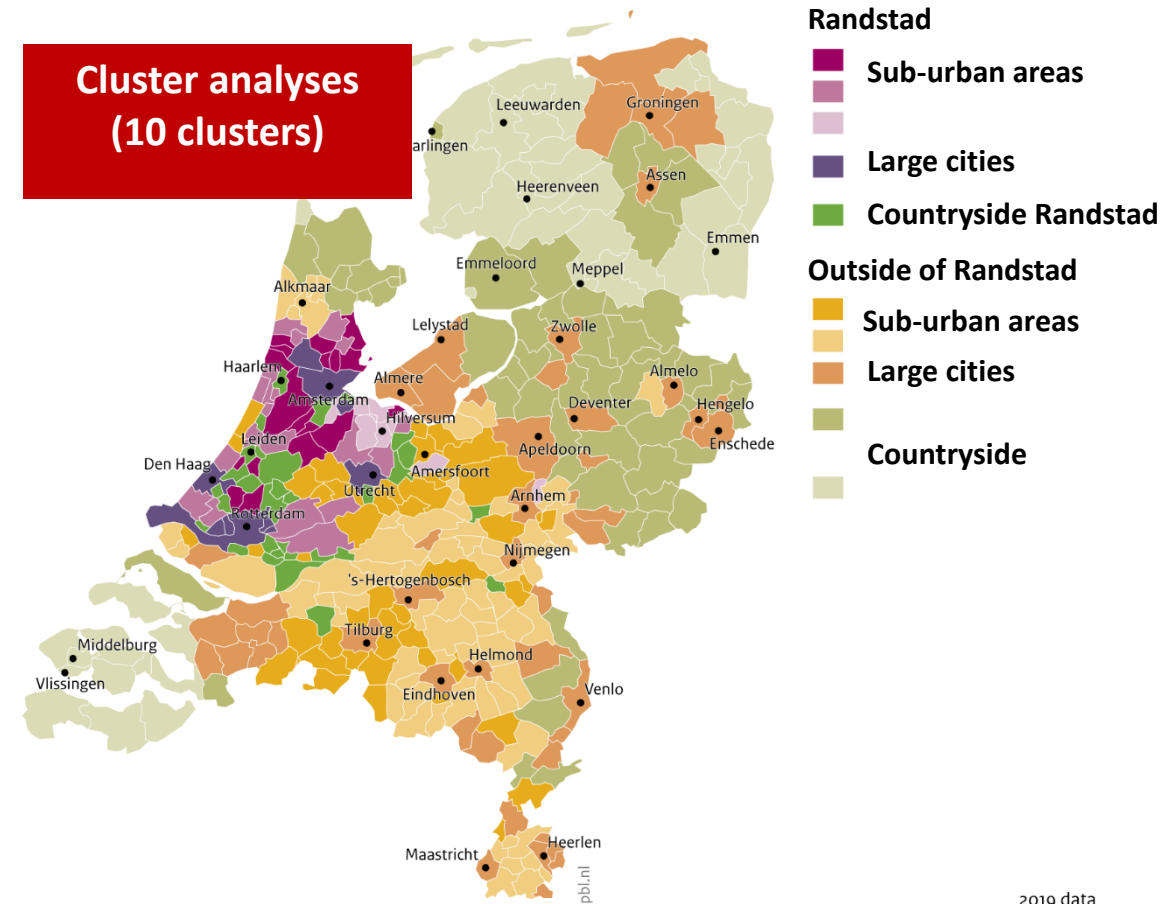


Bron: PBL

2019 data

- > Highest well-being in Randstad area
 - A variety of aspects available in different municipalities
- > Higher well-being in sub-urban areas
 - Green and safe areas with the advantages of large cities close by.
- > Lowest well-being in the countryside
 - Little variation in municipalities

Typologies of municipalities





Thank you for your attention